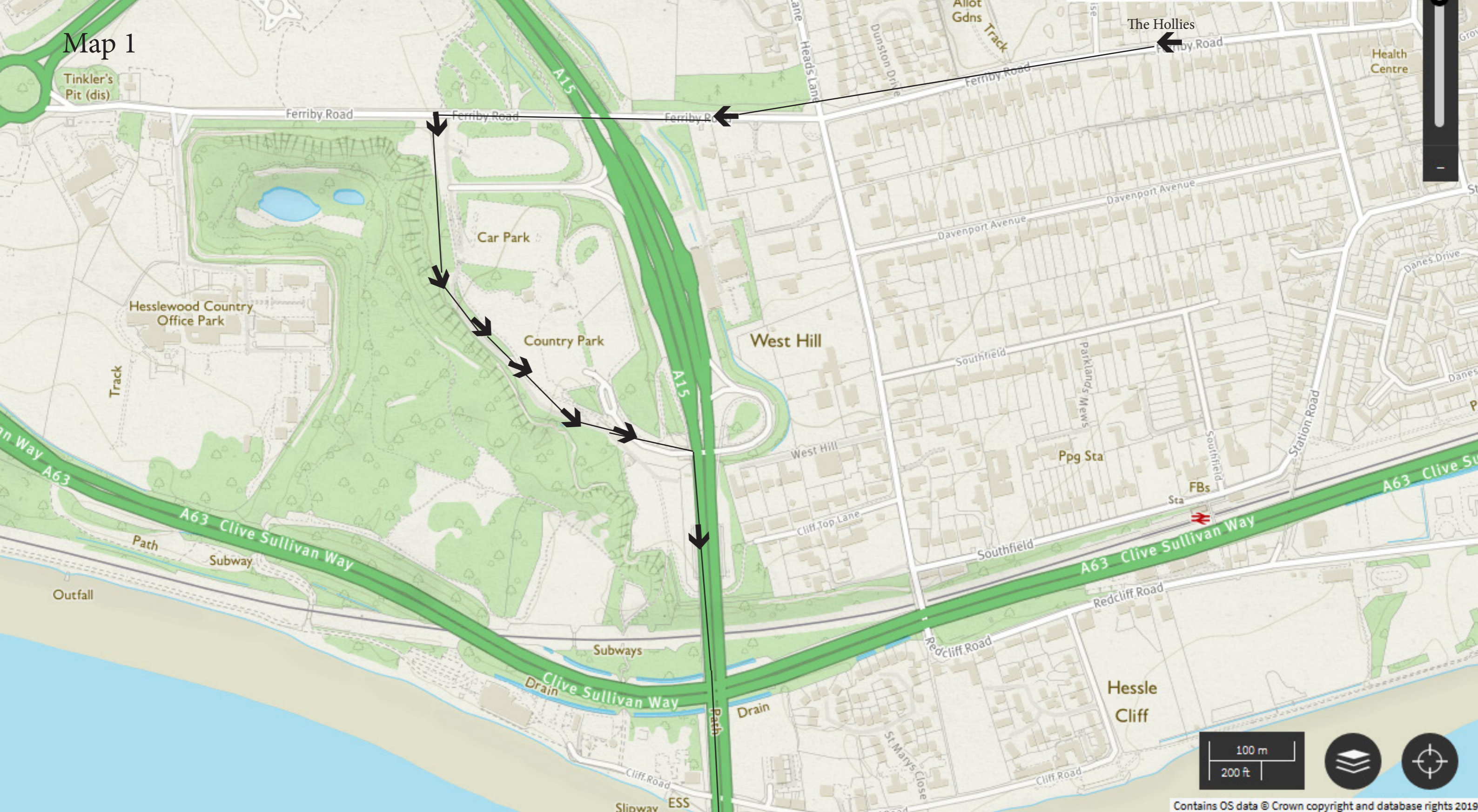


Map 1



Contains OS data © Crown copyright and database rights 2019

1. Leave the Hollies heading for the car park at the Humber Bridge Country Park
2. Once at the Country Park follow the right hand pavement past the car park and enter the Country Park. The path (detailed on map 2) bears slowly left as it makes its way towards the Humber Bridge.
3. The path then joins the road. Now head for the bridge and climb the stairs leading to the bridge itself.
4. Once on the bridgeway across the bridge until you come to the steps on the other side then turn around and retrace your steps back to the Hollies. If you feel up to the steps follow the steps down and cross to the other side, climbing again to the bridge. Once there re-cross the bridge and make your way back to the Hollies.

Map 2



Access for all at
Hesse Foreshore Entrance